

Britannia Village Hall Advisory Group #2 Meeting Summary notes – 6.4.2021

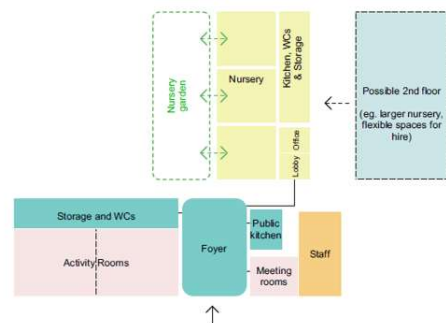
Facilitators: Helen Fernandes (HF), Dan Hill (DH), Alice Hamlin (AH) (Mole), Chris Carthy (Igloo), Frances Young (DLP Planning). 4 residents and 6 stakeholders also attended.

Meeting purpose: To gain feedback from residents and stakeholders on the emerging options for the hall site.

Summary notes:

- HF thanked everyone for coming and reminded them of the purpose of the meeting: to share feedback on the development plans for Britannia Village Hall so we can create a new community space and houses which the community can be proud of.
- DH shared feedback we'd heard from the last advisory group meeting and set out how the team is incorporating this into the project design work
- AH presented two options which are included below. Both options involve a community space with a large foyer which would be the heart of the building, 2 activity rooms (which could be made into 1 larger hall, still smaller than the existing main hall space), and 2 meeting rooms, plus a dedicated set of rooms for the nursery. Housing is also provided
- For each option participants provided feedback in breakout groups

Option 1: Central Garden:

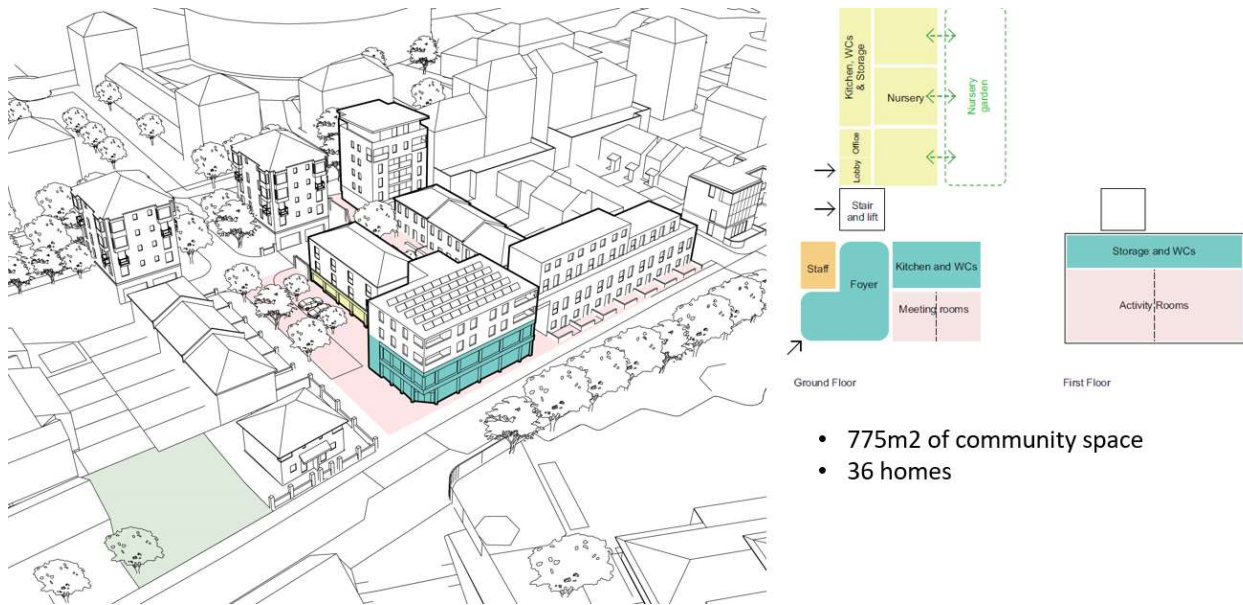


- 750-1,000m2 of community space
- 28 homes

Feedback from participants:

- Liked that all the community spaces were provided at ground level although careful thought would be needed to ensure sufficient outdoor space for all uses including after-school club.
- Concerns raised around overlooking into school, overshadowing surrounding homes and parking provision – particularly for events.
- Better to provide taller elements at Wesley Avenue and along Evelyn/Audley corner.
- Generally the scheme could be more welcoming – what about an archway/glimpse into the green centre of the project?

Option 2: Community Corner



- 775m² of community space
- 36 homes

Feedback from participants:

- Liked the idea of having the nursery having direct access to the street but concerns about how the outdoor space might work.
- Like the more prominent 'corner' of the community centre but concerns on how the operation of the community space might work over two levels.
- Unsure about whether the rear footpath route is helpful or might create further issues if not gated, but gating might also be a negative.

Final thoughts:

- HF thanked everyone for coming. She explained that the feedback would be listened to, and that we would come back next month having developed the emerging options, and doing some financial work on them.
- Participants were invited to a 'Footprint workshop' on the 20th April.
- Next advisory group meeting on Tuesday 4th May at 7pm